

TULA LOUNGE CHAIR



LEATHER + PATINATED STEEL

LOUNGE CHAIR 28"W + 35"D + 26"H

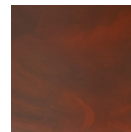
SEAT 18"D + 13"H

COL* 50 SQ FT
(TRADE ONLY)

STANDARD FINISHES



MANCHESTER
COGNAC



RUSTY RED
PATINA

FINISH LIMITATIONS

- NOT AVAILABLE IN CLEAR POLY
- ONLY AVAILABLE IN UPHOLSTERY LEATHER

GENERALLY, PERSONALIZATIONS CAN INCLUDE CHANGES IN:

- DIMENSIONS
- ORIENTATION
- MATERIALS
- FINISHES
- COM/COL/COH

VARIATIONS BETWEEN IMAGES AND ACTUAL MATERIALS + FINISHES ARE TO BE EXPECTED.

PLEASE ORDER SAMPLE SWATCHES ONLINE.

PLEASE CONTACT US FOR LEAD TIMES
RUSH LEAD TIME AVAILABILITY MAY VARY

HANDMADE TO ORDER IN LOS ANGELES

