

PALMAS COFFEE TABLE



// SHOWN IN OVAL

PATINATED STEEL + GLASS

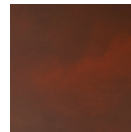
ROUND

48"DIA + 15"H

OVAL

65"W + 30"D + 15"H

STANDARD FINISHES



RUSTY RED
PATINA

FINISH LIMITATIONS

- NOT AVAILABLE IN CLEAR POLY FINISH

GENERALLY, PERSONALIZATIONS CAN INCLUDE CHANGES IN:

- DIMENSIONS
- ORIENTATION
- MATERIALS
- FINISHES
- COM/COL/COH

VARIATIONS BETWEEN IMAGES AND ACTUAL MATERIALS + FINISHES ARE TO BE EXPECTED.

PLEASE ORDER SAMPLE SWATCHES ONLINE.

PLEASE CONTACT US FOR LEAD TIMES
RUSH LEAD TIME AVAILABILITY MAY VARY

HANDMADE TO ORDER IN LOS ANGELES

