

## NOAH BOOKSHELF



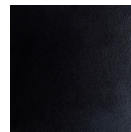
// SHOWN IN TINTED STEEL POWDER COAT

INDUSTRIAL STEEL + POWDER COAT FINISH  
OR  
PATINATED STEEL

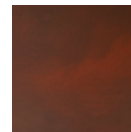
BOOKSHELF 102"W + 18"D + 25"H

BASE 4"H

### STANDARD FINISHES



TINTED  
STEEL PC



RUSTY RED  
PATINA

### FINISH LIMITATIONS

- NOT AVAILABLE IN CLEAR POLY

### GENERALLY, PERSONALIZATIONS CAN INCLUDE CHANGES IN:

- DIMENSIONS
- ORIENTATION
- MATERIALS
- FINISHES
- COM/COL/COH

VARIATIONS BETWEEN IMAGES AND ACTUAL  
MATERIALS + FINISHES ARE TO BE EXPECTED.

PLEASE ORDER SAMPLE SWATCHES ONLINE.

PLEASE CONTACT US FOR LEAD TIMES  
RUSH LEAD TIME AVAILABILITY MAY VARY

HANDMADE TO ORDER IN LOS ANGELES

