

LOLA TOWER



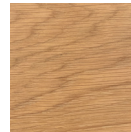
OAK + HARDWAX OIL FINISH + PATINATED STEEL

TOWER 25"W + 16"D + 84"H

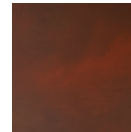
DRAWERS 2 // 8"H

HARDWARE CLEAT PROVIDED

STANDARD FINISHES



OAK, SMOKE



RUSTY RED
PATINA

FINISH LIMITATIONS

- NOT AVAILABLE IN CLEAR POLY

GENERALLY, PERSONALIZATIONS CAN INCLUDE CHANGES IN:

- DIMENSIONS
- ORIENTATION
- MATERIALS
- FINISHES
- COM/COL/COH

VARIATIONS BETWEEN IMAGES AND ACTUAL MATERIALS + FINISHES ARE TO BE EXPECTED.

PLEASE ORDER SAMPLE SWATCHES ONLINE.

PLEASE CONTACT US FOR LEAD TIMES
RUSH LEAD TIME AVAILABILITY MAY VARY

HANDMADE TO ORDER IN LOS ANGELES

